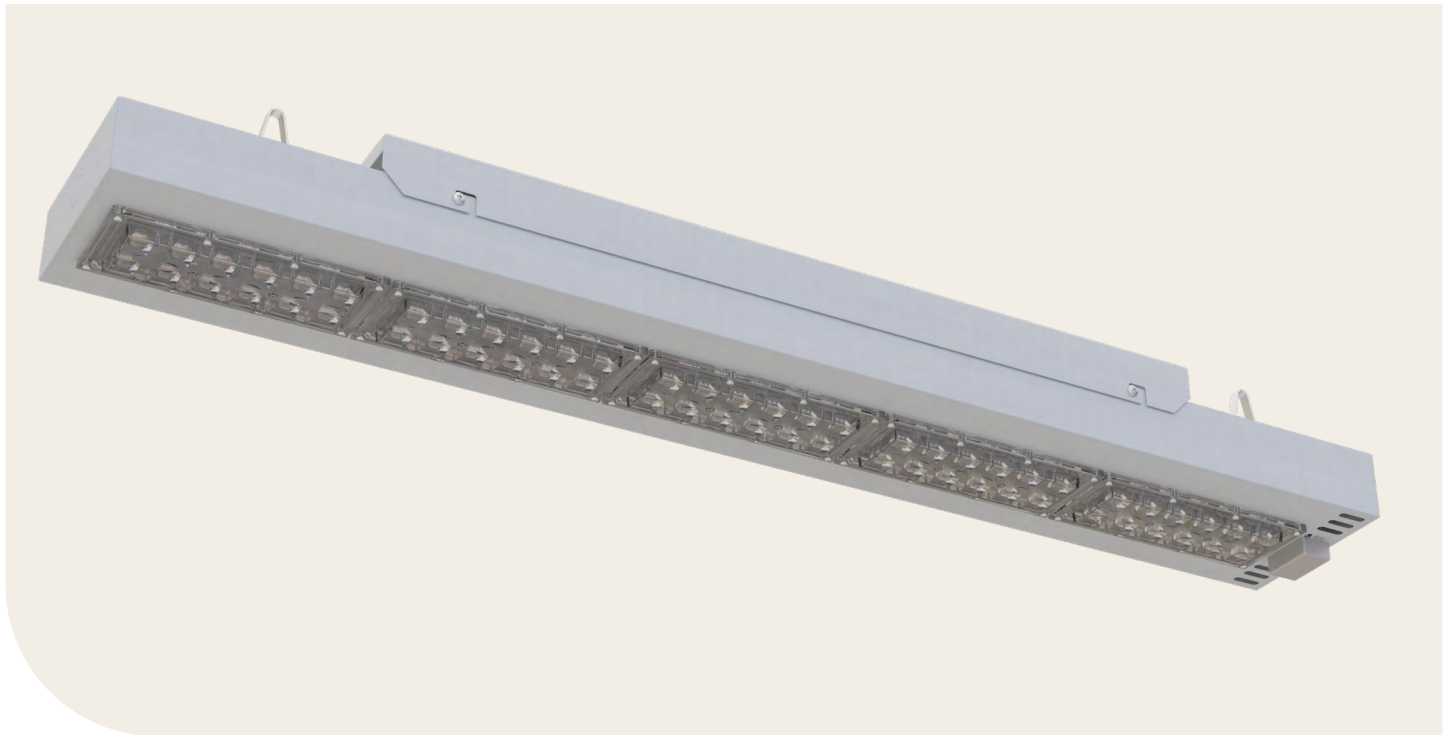


# Starlux

LED aisle racking and high bay luminaire with a modular, die-cast aluminium heat sink. The energy efficient, high performance LED luminaire for warehouse and factory applications



## Features

- Integral control options
- IP20 – IP65 version available
- Universal mounting bracket for surface and conduit mounting available
- Range of lumen outputs available
- Loop in, loop out connection block up to 8 x 2.5mm<sup>2</sup> terminals
- Wireless Control System Available
- 22K, 27K, 3K, 4K, 5K, 65K LEDs

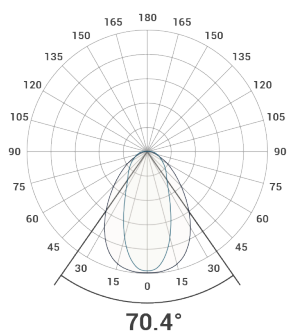
## Applications

- Car Park
- Food Processing
- Industry
- Manufacturing
- Warehouse

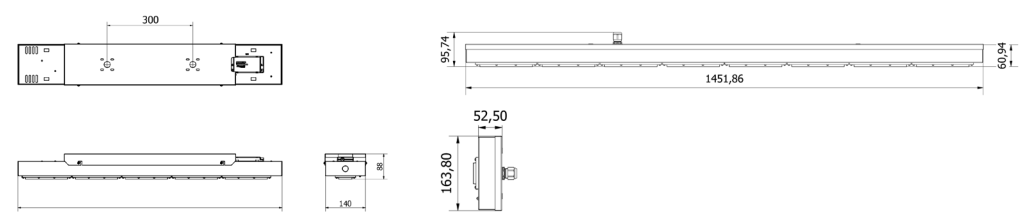
## Accessories

- EMFL** EM LiFePO4 (4W)
- EMFLST** EM SELFTTEST LiFePO4 (4W)
- EMFLP** EM PRO LiFePO4 (4W)
- DD** SwitchDIM/DALI
- PIR** Remote Programmable PIR
- DD-PIR** Programmable PIR (DALI / Daylight Harvesting)
- PIRW** Long Range PIR for Wireless Version
- IP65** IP65 Version (Raw Stainless Steel)
- BKT** Surface/Trunking Mounting Bracket
- IND** Industrial Driver
- RM** Remote Box

## Photometric



## Dimensions



STA-190-LIN-A-IP65-4K

# Starlux



## Technical Details

Part No.	Description	Length (L)	Power (W)	Luminaire Lumens	LI/cW
STA-95-LIN-A-4K	Aisle Racking Luminaire	750mm	95	13,572	142.9
STA-125-LIN-A-4K	Aisle Racking Luminaire	925mm	125	17,738	141.9
STA-160-LIN-A-4K	Aisle Racking Luminaire	1100mm	160	22,683	141.8
STA-190-LIN-A-4K	Aisle Racking Luminaire	1450mm	190	26,531	139.6
STA-190-LIN-A-IP65-4K	IP65 Aisle Racking Luminaire	1450mm	190	26,531	139.6
STA-95-LIN-HB-4K	High Bay Luminaire	750mm	95	13,572	142.9
STA-125-LIN-HB-4K	High Bay Luminaire	925mm	125	17,738	141.9
STA-160-LIN-HB-4K	High Bay Luminaire	1100mm	160	22,683	141.8
STA-190-LIN-HB-4K	High Bay Luminaire	1450mm	190	26,531	139.6

## Additional Information

Body Material	Diffuser Material	Housing Colour	Mounting Type	CCT Offering	CRI	SDCM	UGR Rating	Dimmable	Dimming Method
Mild Steel	Acrylic (PMMA)	RAL9003	Suspended Surface	22K, 27K, 3K, 4K, 5K, 65K	80+	3 step Macadam Ellipse	N/A	Available	SwitchDIM/DALI

IP Rating	IK Rating	Operating Temperature (°C)	L/B value <sup>*A</sup>	Terminal Information	Warranty	Weight (kg)
IP20	N/A	-20° + 40°	60K+ L90/B10	2.5mm Push connector	5 Year warranty 1 year parts and Labour Inclusive	95W - 4.8 125W - n/a 160W - 5.7 190W - 5.9

<sup>\*A</sup>: L/B value based on T<sub>a</sub>25°C operating temperature, standard operation of luminaire within stated parameters. For specific detail please contact [info@powerlitefitz.co.uk](mailto:info@powerlitefitz.co.uk)

Please contact [info@powerlitefitz.co.uk](mailto:info@powerlitefitz.co.uk) for the Inrush current (A) & No.Per 10A breaker.