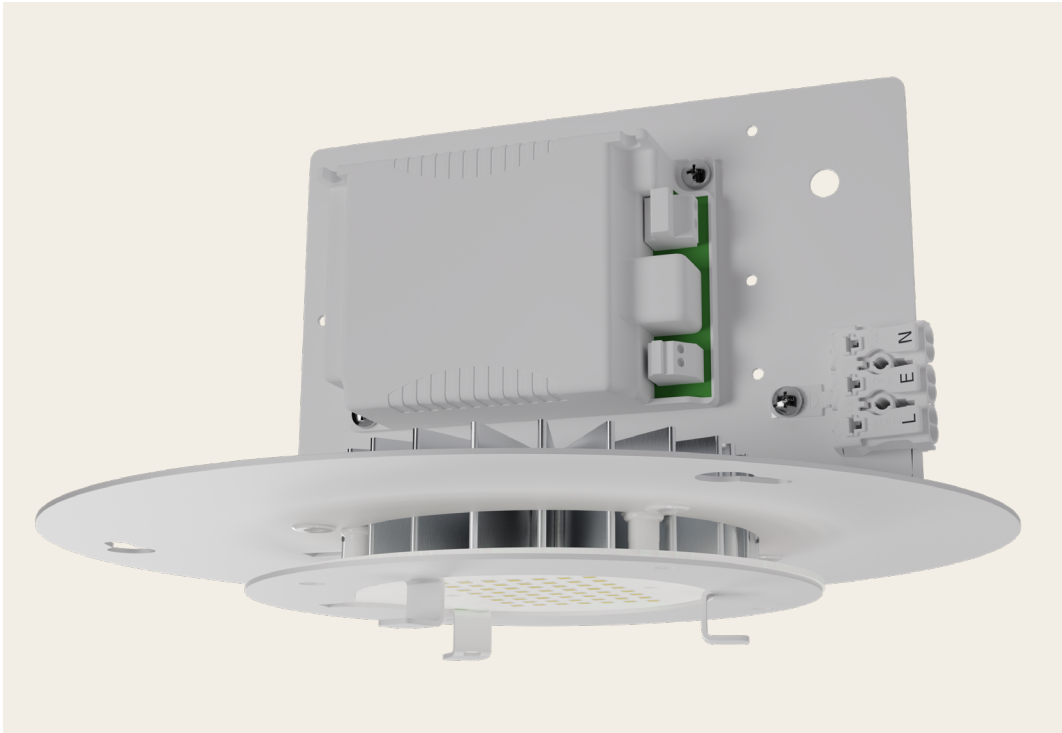


Charlotte Lantern Retrofit

We created a bespoke heritage gear tray for the famous Charlotte Lantern of Edinburgh. The uniqueness of the Charlotte Lantern demanded an innovative solution that stayed true to the original design and fit within the existing casting. To preserve authenticity, we used 2700 Kelvin LEDs to accurately reflect the look and feel of the original time period.



Features

- Designed to fit Existing Charlotte Lantern
- Bespoke Design
- Maintenance free "fit & forget"
- UK manufactured
- 5 Year warranty

Applications

- Architectural
- External
- Roadways

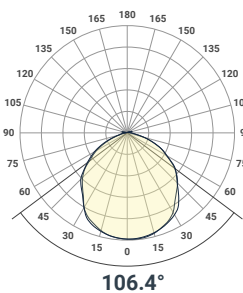
The Problem

The Charlotte Lantern is a historical lantern with a distinctive design—so upgrading it was a challenge. The original casting had to remain intact, but the old lighting no longer met modern standards for performance and reliability.

The Solution

Our solution was to retrofit a gear tray that would fit seamlessly inside the casting. Using 2700K LEDs, the lantern retains its warm, historic look while gaining a modern, low-maintenance upgrade.

Photometric



Dimensions

