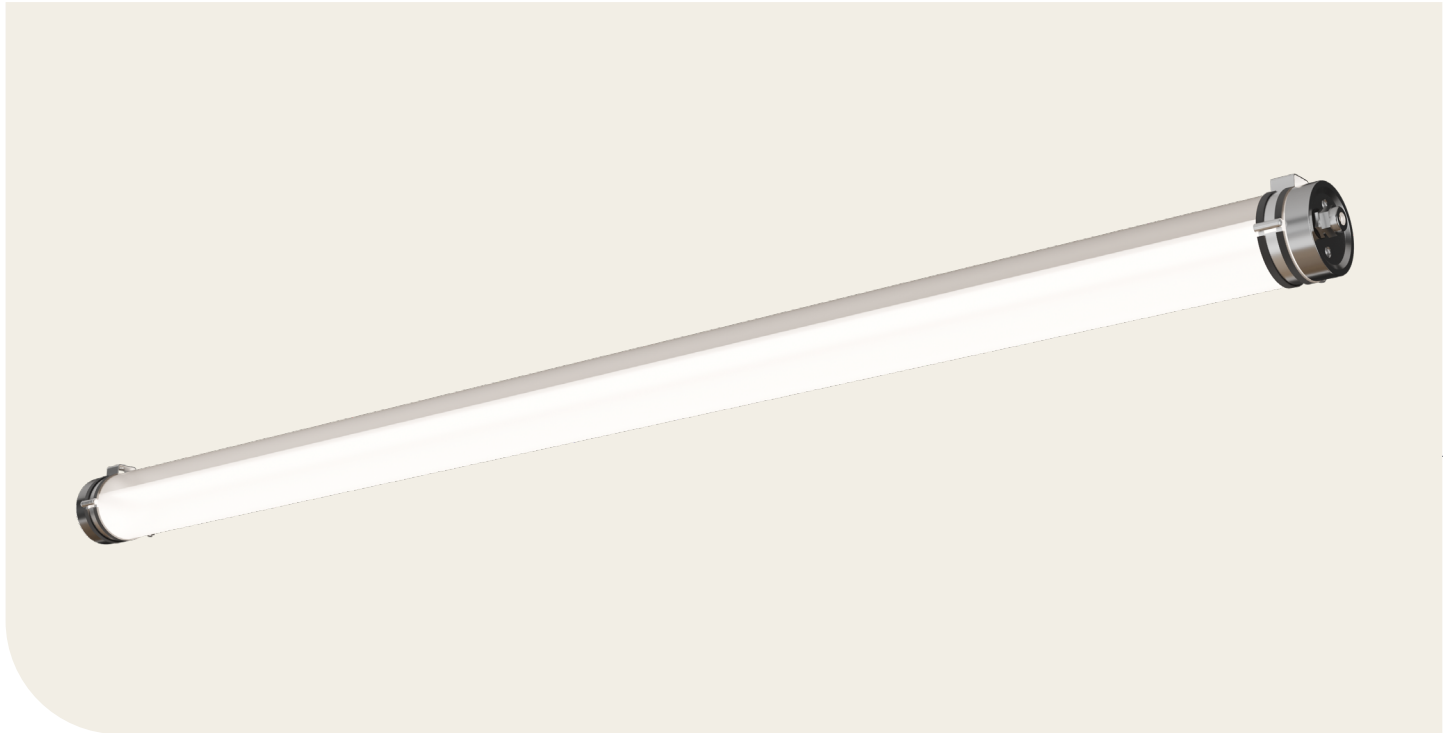


# Pollux

A versatile poultry livestock lighting system for improving the production and welfare of hens in agricultural settings. Dustproof, moisture resistant, and washdown ready, it delivers long lasting performance while supporting bird welfare and improving production.



## Features

- Customisable Poultry Spectra
- Fixed & tunable CCT available
- High CRI options
- Wide optics as standard
- Customisable optics available
- PMMA construction
- Ammonia resistant
- 316 stainless steel end caps & fixings
- IP69K

## Applications

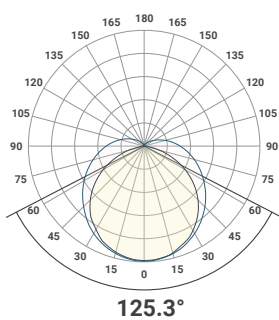


Poultry

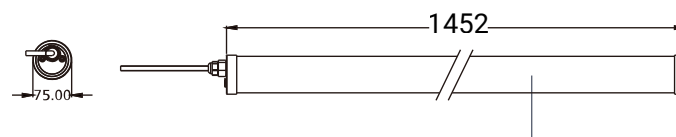
## Options and Accessories

|            |                         |
|------------|-------------------------|
| <b>DD</b>  | SwitchDIM/DALI          |
| <b>TW</b>  | Tunable White           |
| <b>CHR</b> | Tunable Chroma Spectrum |

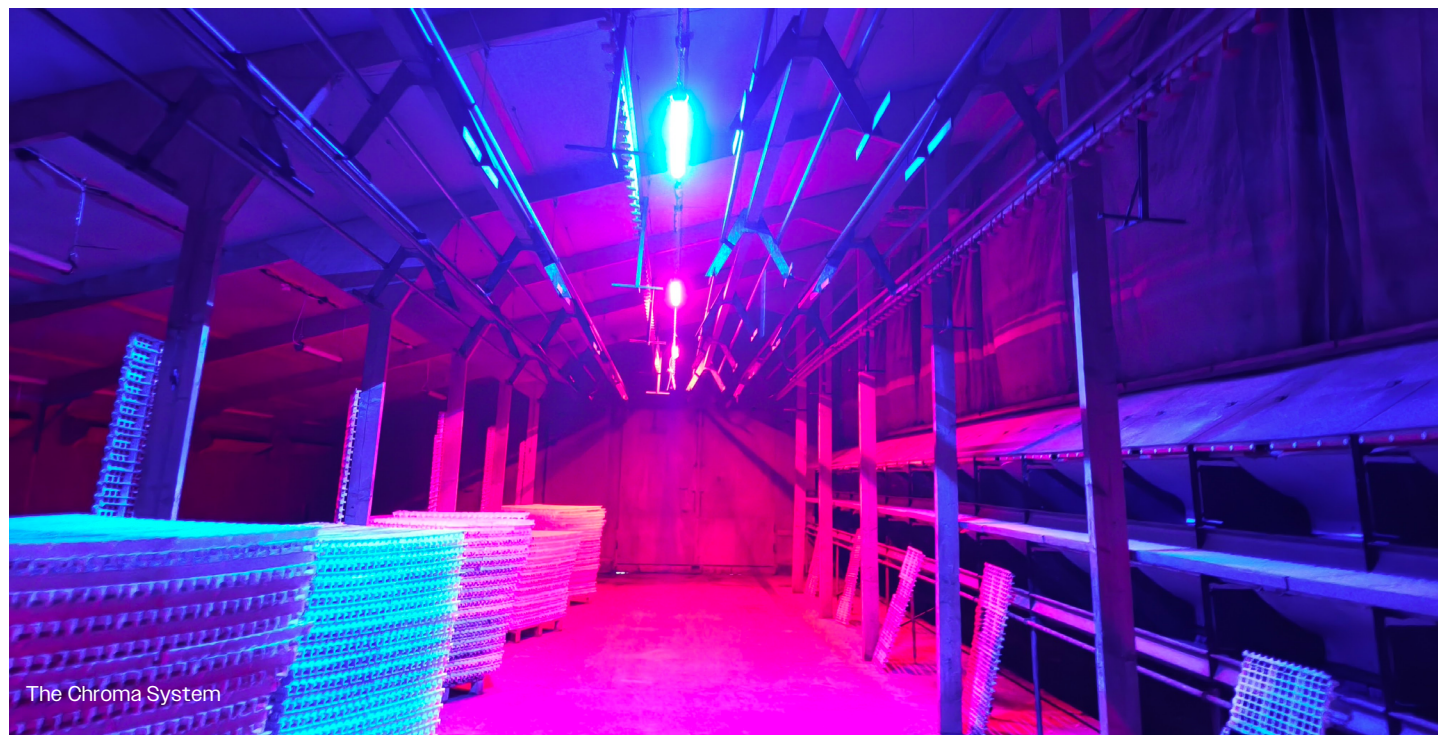
## Photometric



## Dimensions



# Pollux



## Technical Details

| Part No.     | Description                            | Power (W) | Luminaire Lumens | LI/cW |
|--------------|--|-----------|------------------|-------|
| PLX-60-15-4K | 1500mm poultry luminaire               | 60        | 7500             | 125.0 |
| PLX-60-15-TW | 1500mm Tunable White poultry luminaire | 60        | 7500             | 125.0 |
| PLX-PS1-DC   | Poultry DALI PSU & controller box      |           |                  |       |

## Additional Information

| Body Material | Diffuser Material | Mounting Type | CRI | SDCM                   | UGR Rating | Dimmable | Dimming Method | Housing Colour |
|---------------|-------------------|---------------|-----|------------------------|------------|----------|----------------|----------------|
| Acrylic       | Acrylic           | Surface       | 80+ | 3 Step Macadam Ellipse | N/A        | Yes      | SwitchDIM/DALI | N/A            |

| IP Rating | IK Rating | Temperature | L/B value    | Terminal Information     | CCT Offering              | Warranty                        | Weight (Kg) |
|-----------|-----------|-------------|--------------|--------------------------|---------------------------|---------------------------------|-------------|
| IP69K     | N/A       | -20 +40     | 60K+ L90/B10 | 3 x 2.5mm Push connector | 22K, 27K, 3K, 4K, 5K, 65K | 1 Year On-Site<br>5 Year Onward | 2.4         |