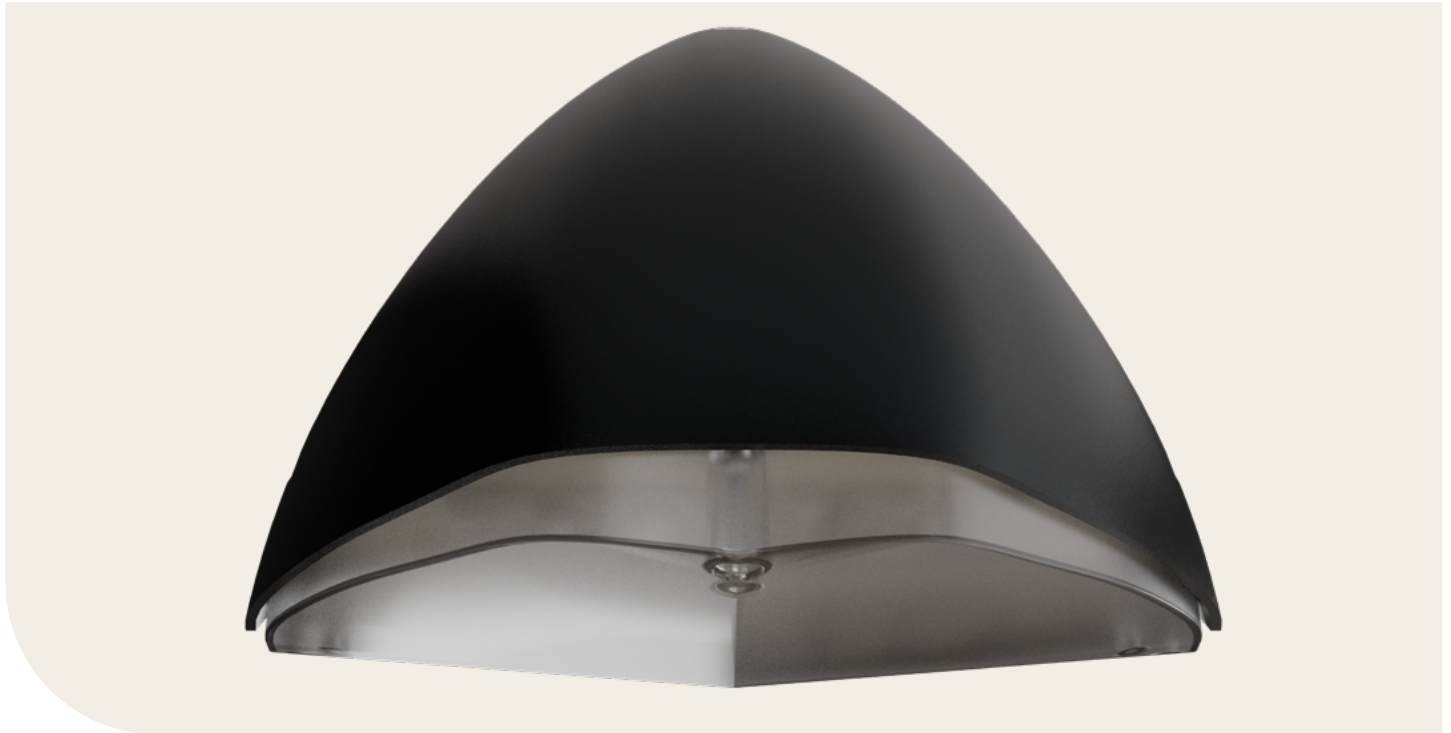


# Spitfire

The Spitfire is an IP65-rated wallpack blending modern minimalism with a high-quality, robust build—perfect for outdoor environments. Enabling dark sky compliance, the Spitfire is designed for conservation and wildlife areas.



## Features

- IP65
- IK10
- Die cast aluminium
- Polycarbonate Diffuser
- Integral EM options available
- Various optics available
- Multi-wattage available
- Bespoke RAL finish available
- No lens as standard
- 22K, 27K, 3K, 4K, 5K, 65K LED Options

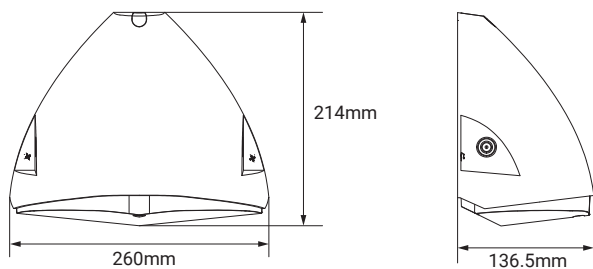
## Applications

- External
- Vandal Resistant
- Social-Housing

## Accessories

- PATH** Path Optic
- STREET** Street Optic
- FLOOD** Flood Optic

## Dimensions



# Spitfire



## Technical Details

Part No.	Description	Power (W)	Luminaire Lumens	LI/cW
SF-MULTI-WH-4K	White Multi Wattage Modern Wall Pack	8 - 40	1120 - 5600	140.0
SF-MULTI-BK-4K	Black Multi Wattage Modern Wall Pack	8 - 40	1120 - 5600	140.0

Body Material	Diffuser Material	Housing Colour	Mounting Type	CCT Offering	CRI	SDCM	UGR Rating	Dimmable	Dimming Method
Die Cast Aluminium	Polycarbonate	RAL9005 RAL9003	Surface	22K, 27K, 3K, 4K, 5K, 65K	80+	3 step Macadam Ellipse	N/A	Available	SwitchDIM/DALI

IP Rating	IK Rating	Operating Temperature (°C)	L/B value <sup>*A</sup>	Terminal Information	Warranty	Weight (kg)
IP65	IK10	-20° + 40°	60K+ L90/B10	2.5mm Push connector	5 Year warranty 1 year parts and Labour Inclusive	3.0

<sup>\*A</sup>: L/B value based on T<sub>a</sub>25°C operating temperature, standard operation of luminaire within stated parameters. For specific detail please contact [info@powerlitefitz.co.uk](mailto:info@powerlitefitz.co.uk)

Please contact [info@powerlitefitz.co.uk](mailto:info@powerlitefitz.co.uk) for the Inrush current (A) & No.Per 10A breaker.